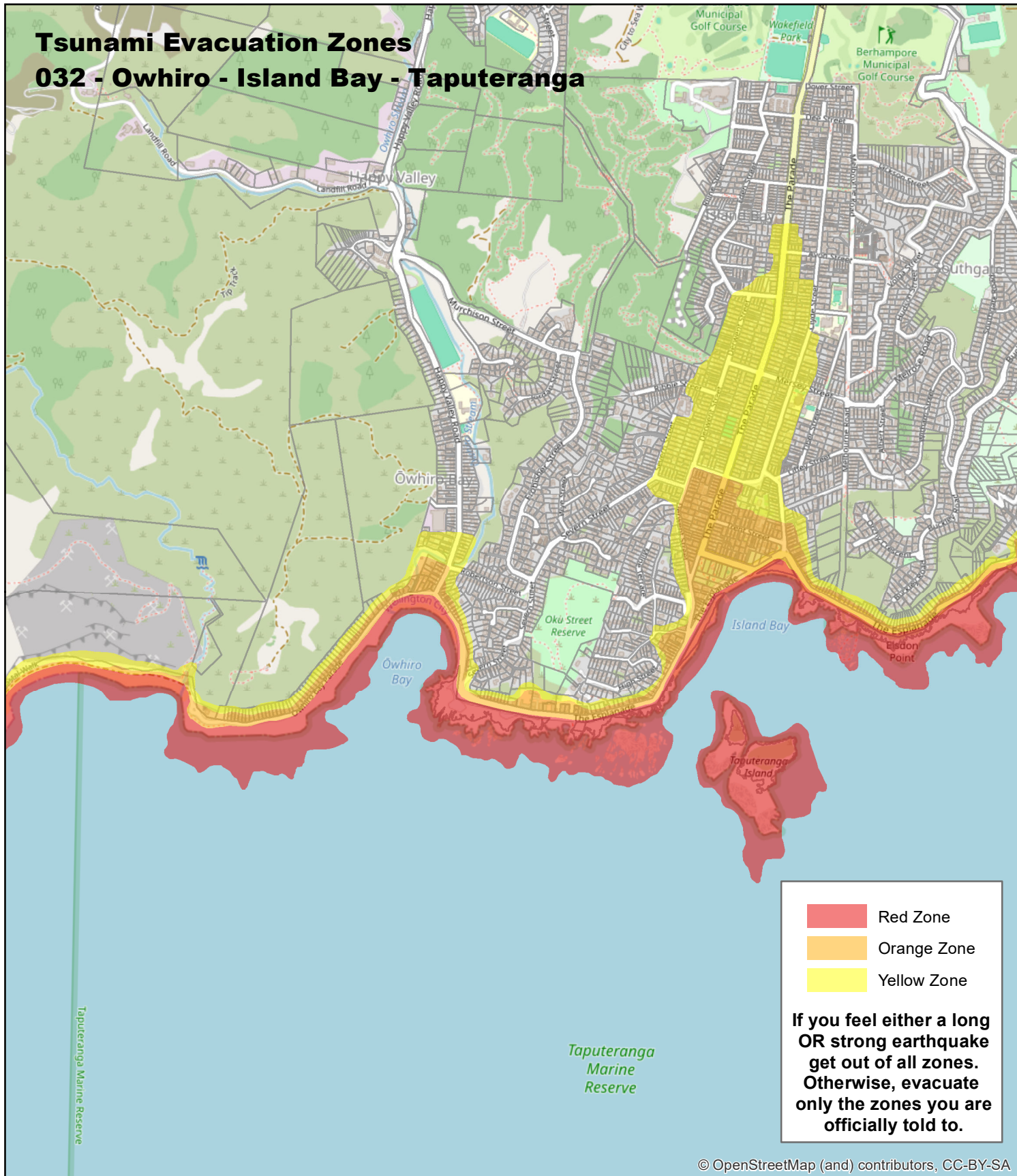


**If you feel an earthquake that is either longer than a minute OR strong enough that it's hard to stand up THEN get to high ground, out of all zones, as soon as shaking stops!**

## Tsunami Evacuation Zones 032 - Ōwhiro - Island Bay - Taputeranga



For maps of the Wellington region and detailed zone descriptions:  
[wremo.nz/hazards/tsunami/](http://wremo.nz/hazards/tsunami/)

